



DECOCO

Precision Engineered Zinc Die Casting

WINDOW AND DOOR HARDWARE CATALOG

STRUCTURAL COMPONENTS

CORNER KEYS | SWIVEL KEYS | TILT KEYS | SLIDE BOLTS | GUSSETS

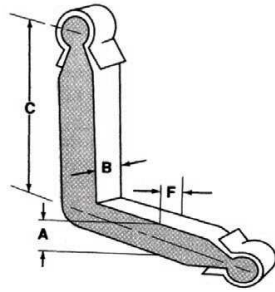


Aluma-Lok® - corner keys

DIMENSION GUIDE

* with glide pad

PART NO.	DIM "A"	DIM "B"	DIM "C"	DIM "F"
204201	0.280	0.120	1.400	0.120
204202	0.280	0.120	0.900	0.120
212201	0.200	0.150	0.850	0.150
215201	0.255	0.180	0.850	0.180
220201	0.250	0.250	0.850	0.250
230200	0.187	0.185	0.850	0.145
230201	0.187	0.185	0.850	0.145
230202	0.187	0.145	0.850	0.145
232201	0.175	0.175	0.850	0.175
239201	0.390	0.190	1.000	0.190
243201*	0.175	0.175	0.850	0.175
270201	0.187	0.187	0.850	0.187
280201	0.200	0.200	0.850	0.200
280202*	0.200	0.200	0.850	0.200
293201*	0.175	0.175	0.850	0.175



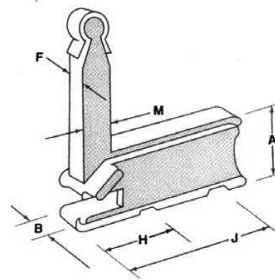
Functional dimensions are shown on the drawing which represent a typical Aluma-Lok® corner key.
Recommended extrusion opening is Dimension "A" plus (+) .015", "B" plus (+) .010".

CORNER KEY HOUSING

DIMENSION GUIDE

* with bug bar - companion slide bolts available.

PART NO.	DIM "A"	DIM "B"	DIM "F"	DIM "H"	DIM "J"	DIM "M"
201201(L)	0.700	0.255	0.145	0.750	1.375	0.195
201202(R)	0.700	0.255	0.145	0.750	1.375	0.195
201203(L)*	0.700	0.255	0.145	0.750	1.375	0.195
201204(R)*	0.700	0.255	0.145	0.750	1.375	0.195
228201(L)	0.645	0.235	0.120	0.645	1.320	0.265
228202(R)	0.645	0.235	0.120	0.645	1.320	0.265
236201(L)	0.700	0.255	0.145	0.750	1.375	0.200
236202(R)	0.700	0.255	0.145	0.750	1.375	0.200



Functional dimensions are shown on the drawing which represent a typical housing.

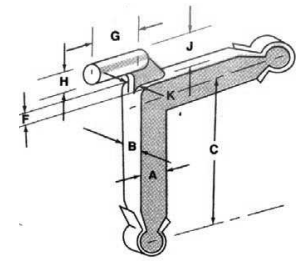
Aluma-Lok® - swivel keys (handed)

DIMENSION GUIDE

* with glide pad

PART NO.	DIM "A"	DIM "B"	DIM "C"	DIM "F"	DIM "G"	DIM "H"	DIM "J"	DIM "K"
301201(L)	0.200	0.145	0.850	0.145	0.300	0.195	0.250	0.119
301202(R)	0.200	0.145	0.850	0.145	0.300	0.195	0.250	0.119
301207(L)	0.200	0.145	0.850	0.145	0.300	0.195	0.250	0.119
301208(R)	0.200	0.145	0.850	0.145	0.300	0.195	0.250	0.119
305201(L)	0.265	0.120	0.850	0.120	0.290	0.180	0.200	0.120
305202(R)	0.265	0.120	0.850	0.120	0.290	0.180	0.200	0.120
381200(L)*	0.175	0.175	0.850	0.175	0.250	0.150	0.105	0.093
381201(R)*	0.175	0.175	0.850	0.175	0.250	0.150	0.105	0.093

Functional dimensions are shown on the drawing which represent a typical Aluma-Lok® swivel key.
Recommended extrusion opening is Dimension "A" plus (+) .015", "B" plus (+) .010".



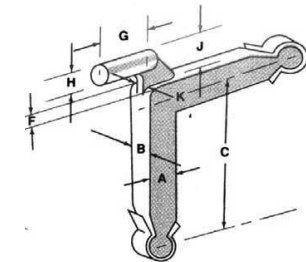
Aluma-Lok® - swivel keys (non-handed)

DIMENSION GUIDE

* with glide pad

PART NO.	DIM "A"	DIM "B"	DIM "C"	DIM "F"	DIM "G"	DIM "H"	DIM "J"	DIM "K"
343201*	0.175	0.175	0.850	0.175	0.240	0.160	0.105	0.100
353201	0.187	0.145	0.850	0.145	0.312	0.171	0.250	0.104
370201	0.187	0.187	0.850	0.187	0.295	0.171	0.242	0.110
380201	0.200	0.200	0.850	0.200	0.243	0.171	0.235	0.125

Functional dimensions are shown on the drawing which represent a typical Aluma-Lok® swivel key.
Recommended extrusion opening is Dimension "A" plus (+) .015", "B" plus (+) .010".



MASTER FRAME KEYS

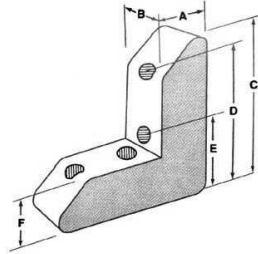
DIMENSION GUIDE

PART NO.	DIM "A"	DIM "B"	DIM "C"	DIM "D"	DIM "E"	DIM "F"
112	0.423	0.334	1.440	1.142	—	0.423
117	0.410	0.340	1.525	1.134	—	0.410
132	0.510	0.812	1.875	1.250	0.375	0.510
133	0.962	0.812	2.000	1.250	—	0.510
134	0.630	0.363	1.875	1.265	0.330	0.630
137	0.497	0.295	1.875	1.265	0.609	0.497
220WH	0.252	0.252	1.375	0.860	—	0.252
221WH	0.252	0.252	1.375	0.860	—	0.252

(With screw holes)

Functional dimensions are shown on the drawing which represent a typical key.

Hole spacing from outside corner as the "D" and "E" dimensions, were applicable.



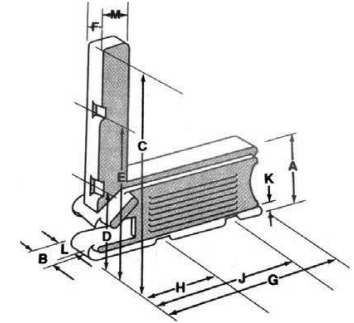
CORNER KEY HOUSING

DIMENSION GUIDE

PART NO.	DIM "A"	DIM "B"	DIM "C"	DIM "D"	DIM "E"	DIM "F"	DIM "G"	DIM "H"	DIM "J"	DIM "K"	DIM "L"	DIM "M"
201	0.700	0.255	1.750	0.760	1.380	0.145	1.610	0.750	1.375	0.040	0.200	0.195
203	0.645	0.235	1.930	0.607	1.282	0.150	1.580	0.645	1.320	0.055	0.185	0.265
218	0.475	0.234	1.590	0.652	0.688	0.234	1.490	0.552	1.240	0.050	0.194	0.475
229	0.715	0.235	1.625	0.651	1.339	0.235	1.670	0.651	1.339	0.040	0.185	0.475

(Use with slide bolts)

Functional dimensions are shown on the drawing which represent a typical housing.

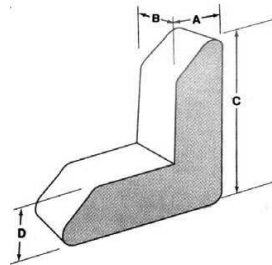


SCREEN CORNERS

DIMENSION GUIDE

PART NO.	DIM "A"	DIM "B"	DIM "C"	DIM "D"
134	0.630	0.363	1.875	0.630
135	0.665	0.295	1.875	0.489
136	0.507	0.295	1.875	0.507
137	0.497	0.295	1.875	0.497

Functional dimensions are shown on the drawing which represent a typical screen corner.



PILING CORNER KEYS

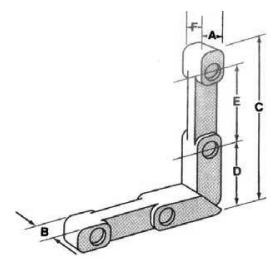
DIMENSION GUIDE

PART NO.	DIM "A"	DIM "B"	DIM "C"	DIM "D"	DIM "E"	DIM "F"
208	0.190	0.185	1.369	0.377	0.812	0.150
240	0.252	0.252	1.375	0.439	0.812	0.168
245	0.203	0.220	1.500	0.625	0.625	0.130
246	0.203	0.220	1.500	0.625	0.625	0.130
253	0.200	0.205	1.360	0.480	0.750	0.120
255	0.240	0.171	1.468	0.750	0.500	0.171
265	0.175	0.175	1.250	1.250	0.673	0.175
274	0.195	0.195	1.250	0.400	0.720	0.125
278	0.187	0.149	1.250	0.500	0.500	0.093
298	0.195	0.160	1.250	0.480	0.500	0.100

(Left and right hand)

Functional dimensions are shown on the drawing which represent a typical wool pile or offset key.

The amount of offset is determined by the difference between dimensions "B" and "F".



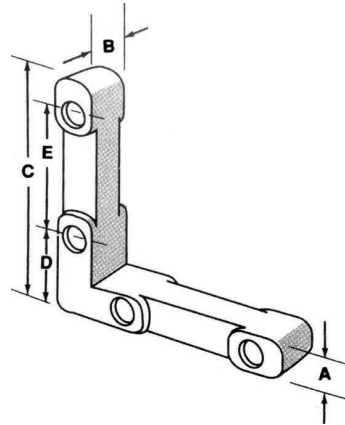
REVERSIBLE CORNER KEYS

DIMENSION GUIDE

* with glide pad

PART NO.	DIM "A"	DIM "B"	DIM "C"	DIM "D"	DIM "E"
202	0.190	0.150	1.369	0.377	0.812
204	0.265	0.120	1.470	0.617	0.680
209	0.190	0.180	1.369	0.345	0.812
210	0.245	0.250	1.368	0.495	0.750
220	0.252	0.252	1.375	0.439	0.812
221	0.252	0.252	1.437	0.439	0.812
223	0.248	0.180	1.235	0.500	0.500
233	0.290	0.206	1.571	0.618	0.750
238	0.207	0.156	1.250	0.375	0.562
242	0.380	0.175*	1.575*	0.652	0.673
243	0.180	0.180*	1.250*	0.437	0.673
247	0.203	0.220	1.500	0.625	0.625
248	0.210	0.120	1.250	—	—
254	0.240	0.168	1.468	0.490	0.750
260	0.187	0.187	1.450	—	—
269	0.180	0.175	1.300	0.392	0.790
270	0.187	0.187	1.375	0.469	0.750
273	0.195	0.195	1.250	0.400	0.720
275	0.180	0.180	1.415	0.375	0.812
277	0.175	0.245	1.187	0.687	—
279	0.187	0.149	1.250	0.500	0.500
280	0.200	0.200	1.375	0.469	0.750
282	0.185	0.185	1.300	0.405	0.562
283	0.190	0.190	1.312	0.406	0.562
292	0.231	0.150	1.250	—	—
299	0.195	0.160	1.250	0.480	0.500

Functional dimensions are shown on the drawing which represent a typical reversible key.



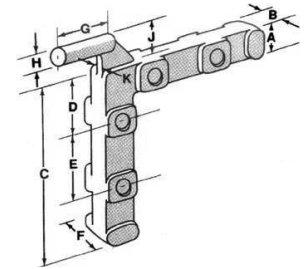
TILT KEYS

DIMENSION GUIDE

PART NO.	DIM "A"	DIM "B"	DIM "C"	DIM "D"	DIM "E"	DIM "F"	DIM "G"	DIM "H"	DIM "J"	DIM "K"	OFF SET
301	0.200	0.145	1.490	0.573	0.620	0.145	0.300	0.195	0.250	0.119	0.050
305	0.265	0.120	1.480	0.617	0.680	0.120	0.290	0.125	0.200	0.120	0.070
318	0.475	0.234	1.590	0.651	0.688	0.234	0.310	0.145	0.232	0.145	0.390

Functional dimensions are shown on the drawing which represent a typical tilt key.

Pivot pin offset, where applicable, is shown as the distance from the center-line of the pin to the face of the vertical leg.



OFFSET PILING TILT KEYS

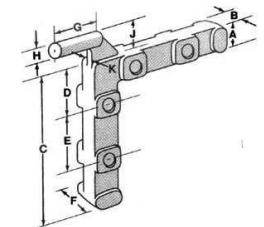
DIMENSION GUIDE

PART NO.	DIM "A"	DIM "B"	DIM "C"	DIM "D"	DIM "E"	DIM "F"	DIM "G"	DIM "H"	DIM "J"	DIM "K"	OFF SET
308	0.190	0.150	1.369	0.377	0.812	0.150	0.285	0.180	0.255	0.090	0.065
311	0.200	0.125	1.350	0.450	0.750	0.125	0.295	0.165	0.230	0.090	0.040
326	0.175	0.135	1.240	—	—	0.175	0.250	0.150	0.095	0.110	0.020
340	0.252	0.172	1.375	0.439	0.812	0.172	0.295	0.250	0.060	0.093	0.039
345	0.203	0.220	1.500	0.625	0.625	0.130	0.312	0.230	0.281	0.120	—
346	0.203	0.220	1.500	0.625	0.625	0.130	0.312	0.230	0.281	0.120	—
348	0.210	0.120	1.250	—	—	0.120	0.280	0.120	0.200	0.062	0.062
354	0.242	0.165	1.335	0.460	0.750	0.165	0.270	0.165	—	0.165	—
373	0.195	0.195	1.250	0.400	0.720	0.195	0.250	0.160	0.250	0.950	0.082
374	0.195	0.195	1.250	0.400	0.720	0.123	0.270	0.160	0.240	0.130	0.015
378	0.187	0.149	1.250	0.500	0.500	0.093	0.285	0.140	0.210	0.085	—
398	0.195	0.160	1.250	0.480	0.500	0.100	0.250	0.170	0.220	0.065	—

(Left and right hand)

Wool pile or offset keys, may be determined easily by comparing the "B" and "F" dimensions. If the "B" and "F" dimensions are the same the key is reversible; if these two dimensions are not the same, the key offset for use with wool piling.

Pivot pin offset is offset, where applicable, is shown as the distance from the center-line of the pin to the face of the vertical leg.



REVERSIBLE TILT KEYS

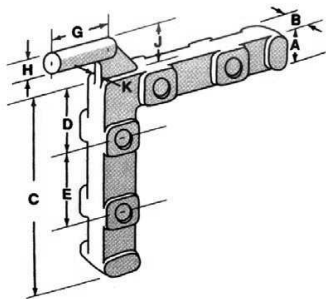
DIMENSION GUIDE

* with glide pad

PART NO.	DIM "A"	DIM "B"	DIM "C"	DIM "D"	DIM "E"	DIM "G"	DIM "H"	DIM "J"	DIM "K"
302	0.265	0.145	1.480	0.617	0.680	0.300	0.115	0.057	0.115
320	0.252	0.252	1.375	0.437	0.812	0.295	0.252	0.060	0.140
333	0.298	0.206	1.571	0.618	0.750	0.290	0.180	0.070	0.130
338	0.207	0.156	1.250	0.375	0.562	0.265	0.165	0.225	0.117
339	0.187	0.149	1.250	0.500	0.500	0.240	0.120	0.210	0.085
342	0.390	0.175	1.475	0.652*	0.673*	0.335	0.160	0.055	0.120
343	0.180	0.180	1.250	0.437*	0.673*	0.335	0.160	0.100	0.100
347	0.203	0.220	1.500	0.625	0.625	0.312	0.243	0.281	0.120
360	0.180	0.187	1.430	—	—	0.285	0.150	0.075	0.150
369	0.180	0.175	1.300	0.392	0.790	0.275	0.190	0.190	0.100
370	0.187	0.187	1.375	0.470	0.750	0.250	0.171	0.241	0.125
375	0.180	0.180	1.355	0.375	0.812	0.285	0.180	0.250	0.140
377	0.175	0.245	1.187	0.437	0.500	0.312	0.187	0.093	0.125
379	0.187	0.149	1.250	0.500	0.500	0.285	0.140	0.210	0.085
380	0.200	0.200	1.375	0.470	0.750	0.243	0.171	0.235	0.125
382	0.190	0.190	1.312	0.406	0.562	0.281	0.100	0.050	0.100
383	0.190	0.190	1.312	0.406	0.562	0.281	0.187	0.250	0.125
399	0.195	0.160	1.250	0.480	0.500	0.250	0.170	0.220	0.065

Functional dimensions are shown on the drawing which represent a typical reversible tilt key.

The key has a symmetrical configuration.



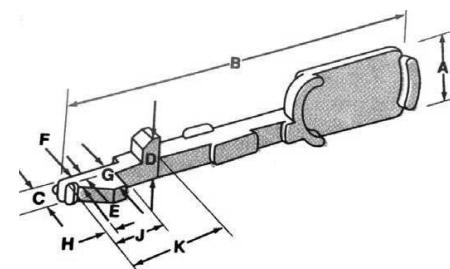
SLIDE BOLTS

DIMENSION GUIDE

PART NO.	DIM "A"	DIM "B"	DIM "C"	DIM "D"	DIM "E"	DIM "F"	DIM "G"	DIM "H"	DIM "J"	DIM "K"
401	0.680	2.940	0.330	0.500	0.100	0.190	0.370	—	0.340	0.720
405	0.595	2.890	0.195	0.375	0.125	0.165	0.280	0.055	0.400	0.755
406	0.595	2.890	0.195	0.375	0.125	0.165	0.280	0.055	0.400	0.755
418	0.465	2.750	0.272	0.303	0.143	0.166	0.268	0.031	0.437	0.740
428	0.585	2.973	0.195	0.390	0.125	0.165	0.280	0.055	0.400	0.835
429	0.680	3.000	0.281	0.562	0.125	0.165	0.165	0.031	0.437	0.740
436	0.680	3.203	0.260	0.490	0.178	0.190	0.190	0.100	0.315	0.873
487	0.550	3.011	0.295	—	0.195	0.071	0.195	0.094	0.500	—

(Use with corner key housing)

Functional dimensions are shown on the drawing which represent a typical slide bolt.



REMOVABLE SLIDE BOLTS

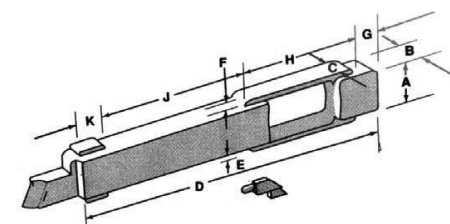
DIMENSION GUIDE

4621 Retainer to be used with both bolts.

Retainer and coil spring may be ordered assembled as Part No. 462201J.

PART NO.	DIM "A"	DIM "B"	DIM "C"	DIM "D"	DIM "E"	DIM "F"	DIM "G"	DIM "H"	DIM "J"	DIM "K"
462	0.475	0.275	0.185	3.502	0.050	0.050	0.250	1.362	1.600	0.250
464	0.490	0.275	0.200	3.502	0.042	0.042	0.250	1.362	1.600	0.250
496	0.465	0.250	0.165	3.047	0.050	0.050	—	—	—	—

Functional dimensions are shown on the drawing which represent a typical removable slide bolt. Many lock nose inserts are available, samples of which will be sent on request.

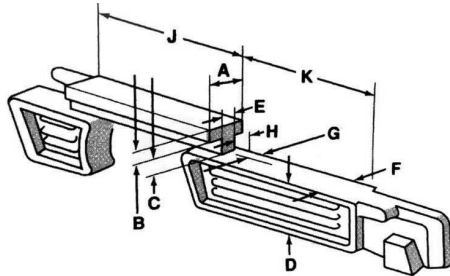


SLIDE BOLTS CONVENTIONAL

DIMENSION GUIDE

PART NO.	DIM "A"	DIM "B"	DIM "C"	DIM "D"	DIM "E"	DIM "G"	DIM "H"	DIM "J"	DIM "K"
408	0.180	0.125	0.110	0.450	0.100	0.040	—	1.365	1.645
409	0.180	0.125	0.110	0.450	0.100	0.040	—	1.365	1.645
410	0.170	0.205	0.133	0.340	0.100	—	0.050	1.418	1.508
430	0.175	0.142	0.131	0.415	0.105	0.035	—	1.460	1.576
432	0.150	0.150	0.090	0.450	0.102	0.020	0.010	1.470	1.615
438	0.147	0.190	0.050	0.480	0.120	—	—	1.750	1.330
439	0.180	0.180	0.070	0.430	0.090	0.045	—	1.625	1.310
445	0.218	0.195	0.075	0.460	0.110	0.055	—	1.375	1.719
446	0.218	0.195	0.075	0.460	0.110	0.055	—	1.375	1.719
449	0.245	0.200	0.065	0.645	0.125	0.060	—	1.625	1.500
450	0.198	0.188	0.064	0.423	0.142	0.028	—	1.600	1.520
452	0.198	0.188	0.640	0.423	0.142	0.028	—	1.631	1.520
455	0.245	0.230	0.075	0.437	0.125	0.060	—	1.625	1.500
469	0.185	0.125	0.085	0.460	0.080	—	0.040	1.185	2.014
471	0.177	0.165	0.870	0.457	0.095	0.045	—	1.360	1.280
477	0.135	0.165	0.850	0.420	0.085	0.030	—	1.500	1.190
480	0.167	0.112	0.105	0.430	0.090	0.055	—	1.500	1.577
483	0.180	0.125	0.105	0.410	0.100	0.030	—	1.750	1.500
485	0.170	0.124	0.124	0.420	0.085	0.060	—	1.600	1.045
499	0.140	0.156	0.069	0.425	0.095	0.025	—	1.435	1.470

Functional dimensions are shown on the drawing which represent a typical slide bolt.
Many lock nose inserts are available, samples of which will be sent upon request.

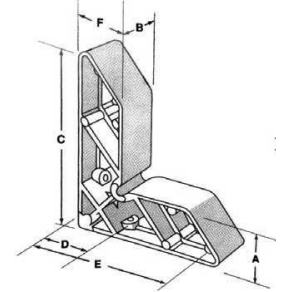


DOOR GUSSETS

DIMENSION GUIDE

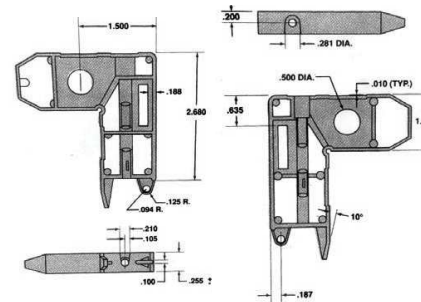
PART NO.	DIM "A"	DIM "B"	DIM "C"	DIM "D"	DIM "E"	DIM "F"	DIM "G"
522	1.296	0.916	4.465	1.000	3.500	—	4.000
527	2.000	0.880	4.205	1.330	3.870	2.000	—
550	1.225	0.860	3.725	1.500	3.125	—	—
570	1.170	0.885	4.000	1.000	3.500	—	—
574	1.190	0.870	4.000	1.527	3.558	—	—
577	1.590	0.866	3.850	1.400	3.400	—	—
581	1.755	0.935	4.500	1.390	4.145	—	—
587	1.560	0.915	4.000	1.000	3.500	—	—

Functional dimensions are shown on the drawing which represent a typical door gusset, or corner.
Screws are countersunk for easy entry of the screw in assembly.
Parts are pressure die-cast on hydraulically operated machines to ensure maximum density and stronger castings.

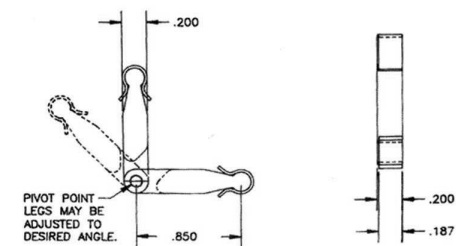


ADDITIONAL COMPONENTS

5137113M6 - screen corner



222200M6 - adjustable Aluma-Lok®





DECO

sales@decoprod.com | (563) 382-4264 | www.decoprod.com